

MATERIALI ESISTENTI

Si rimanda alle relazione tecnica generale.



COMUNE DI GIOVINAZZO

Città Metropolitana di BARI

Assessorato OO.PP. e Lavori Pubblici

Assessorato allo Sport

SETTORE GESTIONE DEL TERRITORIO



Lavori di adeguamento, messa a norma, miglioramento energetico e sismico della Casa di Riposo "San Francesco"

Progetto di fattibilità		Art. 23 co. 1-5-6	D. Lgs. 18 Apr. 2016 n° 50	Proposta di intervento da realizzare con risorse rivenienti dal FSC 2007-2013 - D.G.R. 629/2015
Progetto definitivo		Art. 23 co. 1-7	D. Lgs. 18 Apr. 2016 n° 50	
Progetto esecutivo	X	Art. 23 co. 1-8	D. Lgs. 18 Apr. 2016 n° 50	

Elaborato grafico	TAV. n°	data
Titolo	S9	18 Dicembre 2016
Scala: varie		

**ARMATURA TRAVI PIANO TERRA
stato dei luoghi**

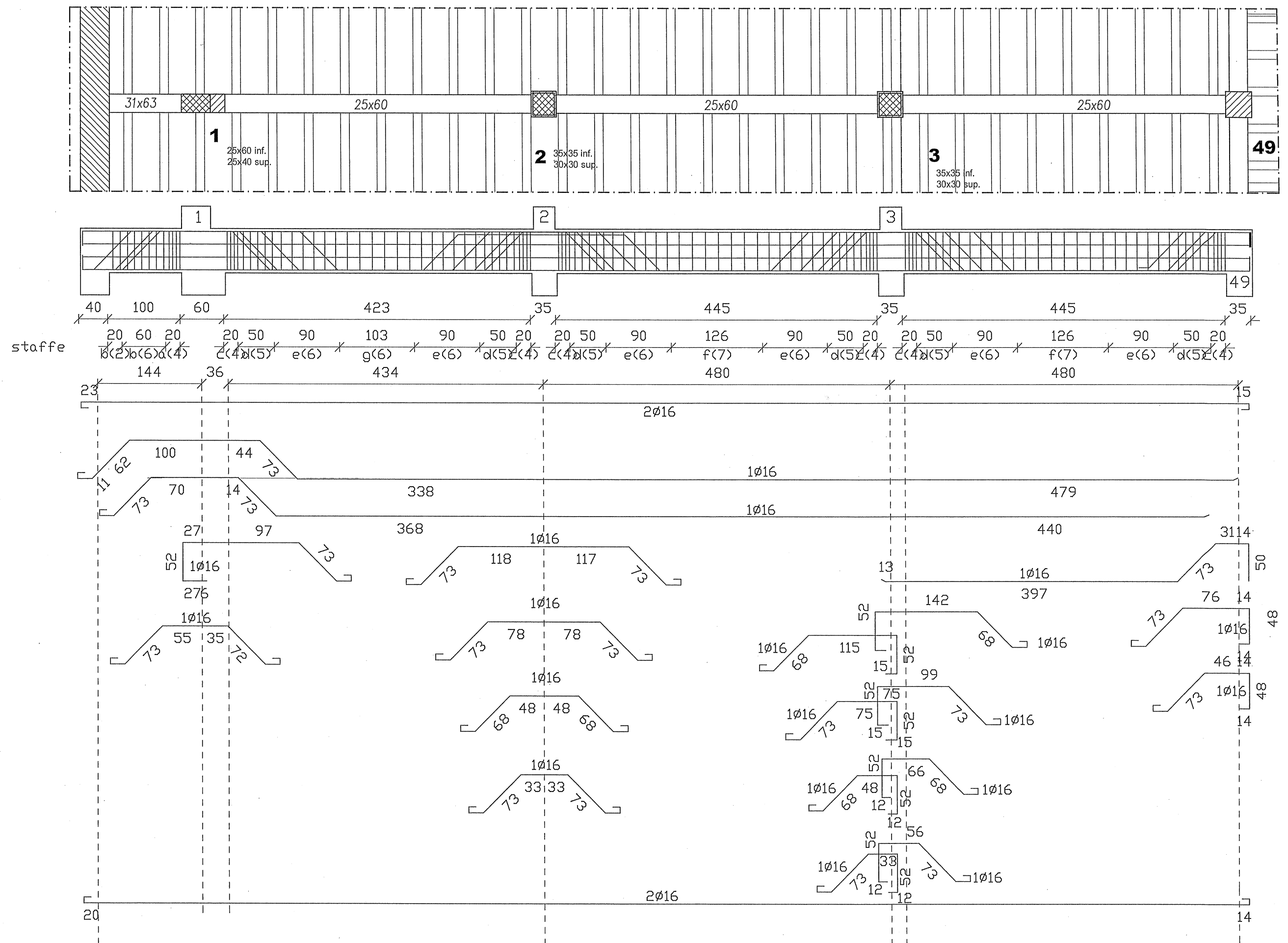
ELABORAZIONE A CURA DEL SETTORE GESTIONE DEL TERRITORIO - SERVIZIO LL.PP.

PROGETTO

RESPONSABILE UNICO DEL PROCEDIMENTO

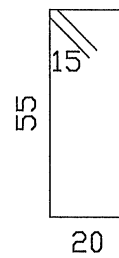
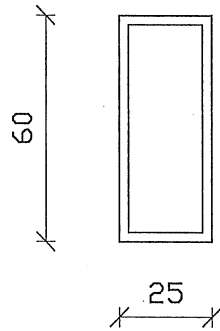
Ing. Cesare TREMATORE

ARMATURA TRAVE 1-49 , 31-46 (piano terra)



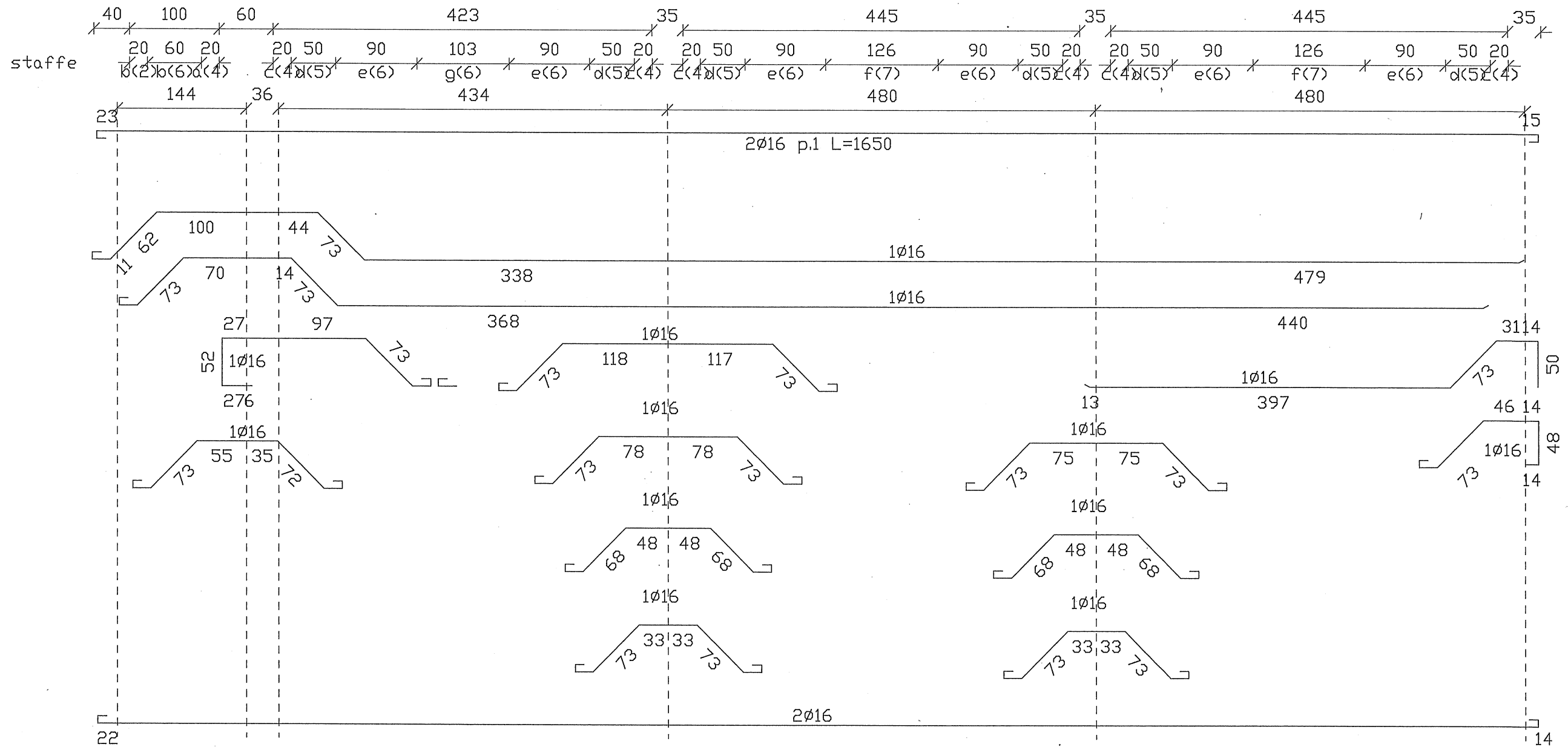
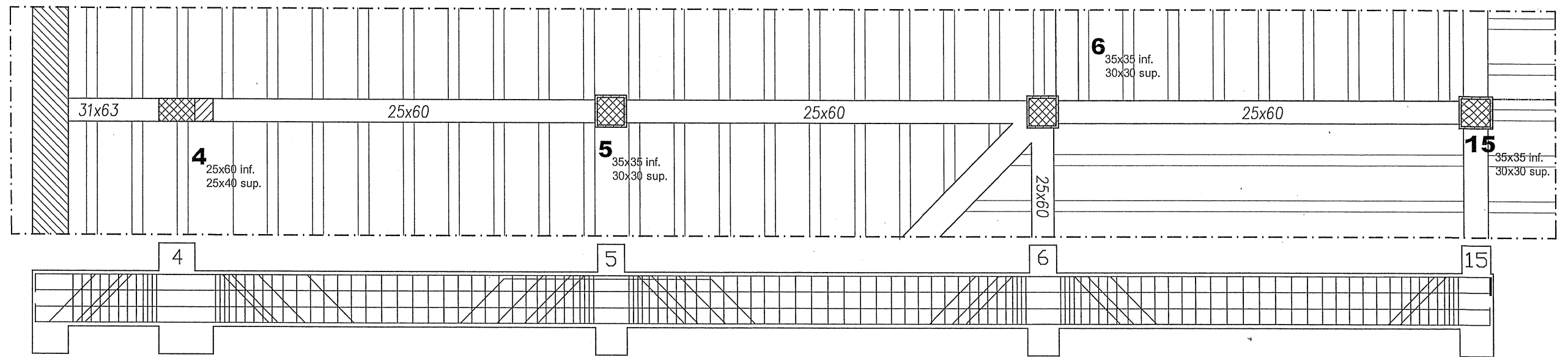
ARMATURA TRAVE 1-49 , 31-46 (piano terra)

sezione scala 1:20



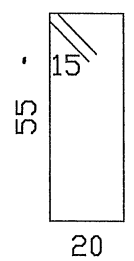
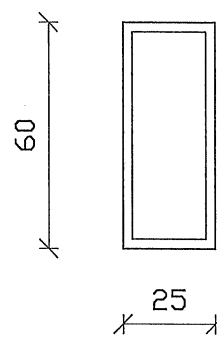
- c) st.Ø6/5
 - d) st.Ø6/10
 - e) st.Ø6/15
 - f) st.Ø6/18
 - g) st.Ø6/17
- L=180

ARMATURA TRAVE 4-15 , 34-45 (piano terra)



ARMATURA TRAVE 4-15 , 34-45 (piano terra)

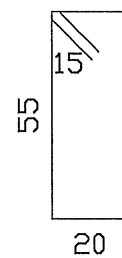
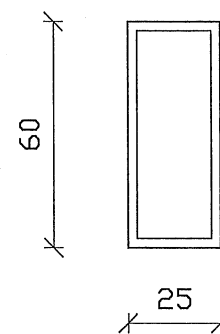
sezione scala 1:20



- c) st.Ø6/5
- d) st.Ø6/10
- e) st.Ø6/15
- f) st.Ø6/18
- g) st.Ø6/17
- L=180

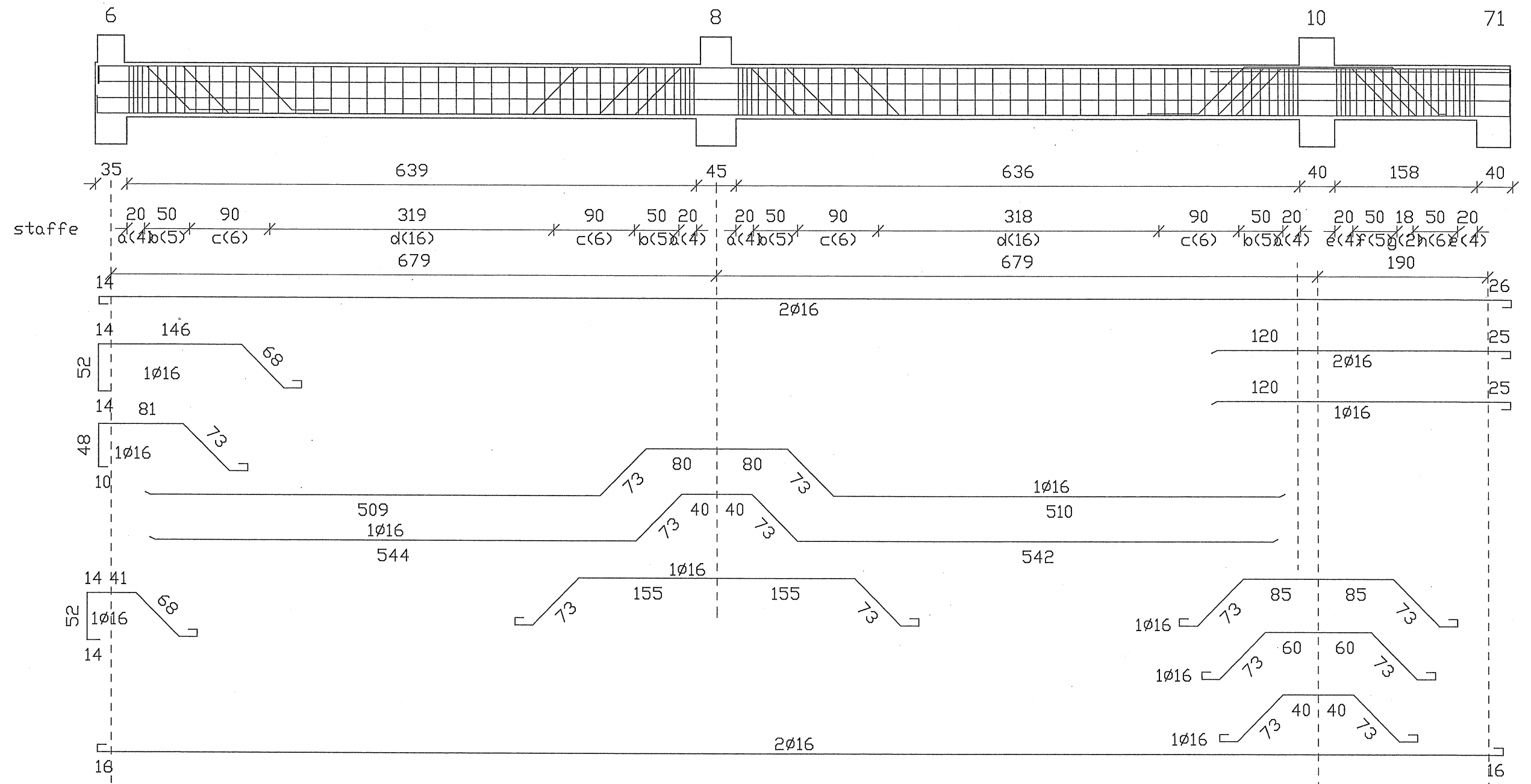
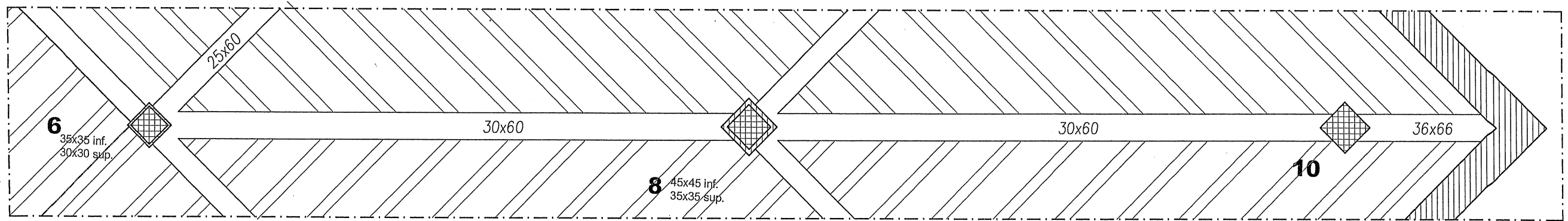
ARMATURA TRAVE 58-48 (piano terra)

sezione scala 1:20



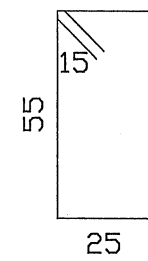
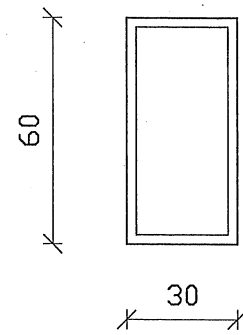
- a) st.Ø6/15
 - b) st.Ø6/5
 - c) st.Ø6/10
 - d) st.Ø6/19
- L=180

ARMATURA TRAVE 6-10 , 21-25 , 40-36 (piano terra)



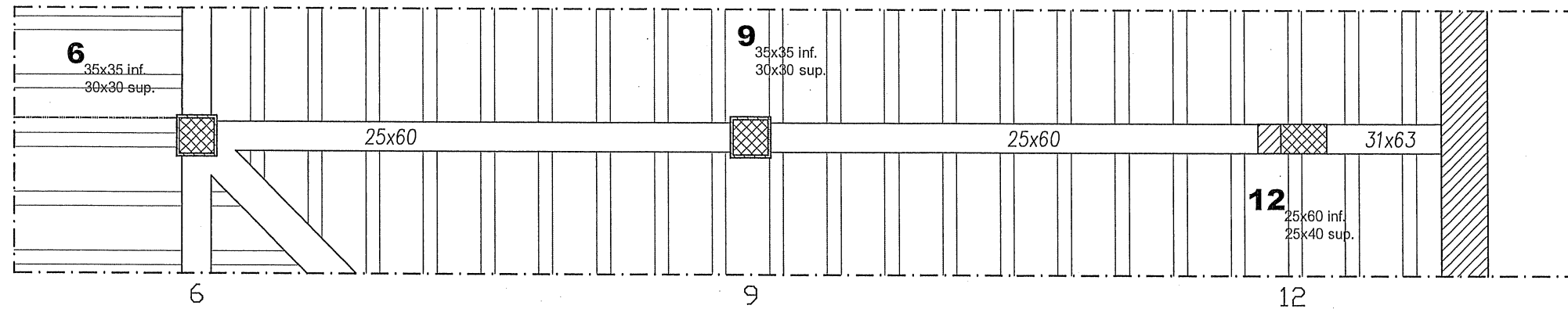
ARMATURA TRAVE 6-10 , 21-25 , 40-36 (piano terra)

sezione scala 1:20

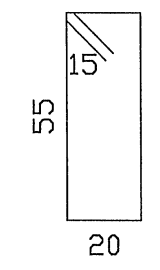
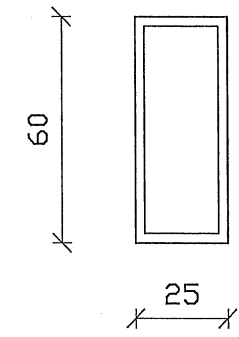


- a) st, $\phi 6/5$
 - b) st, $\phi 6/10$
 - c) st, $\phi 6/15$
 - d) st, $\phi 6/20$
- L=190

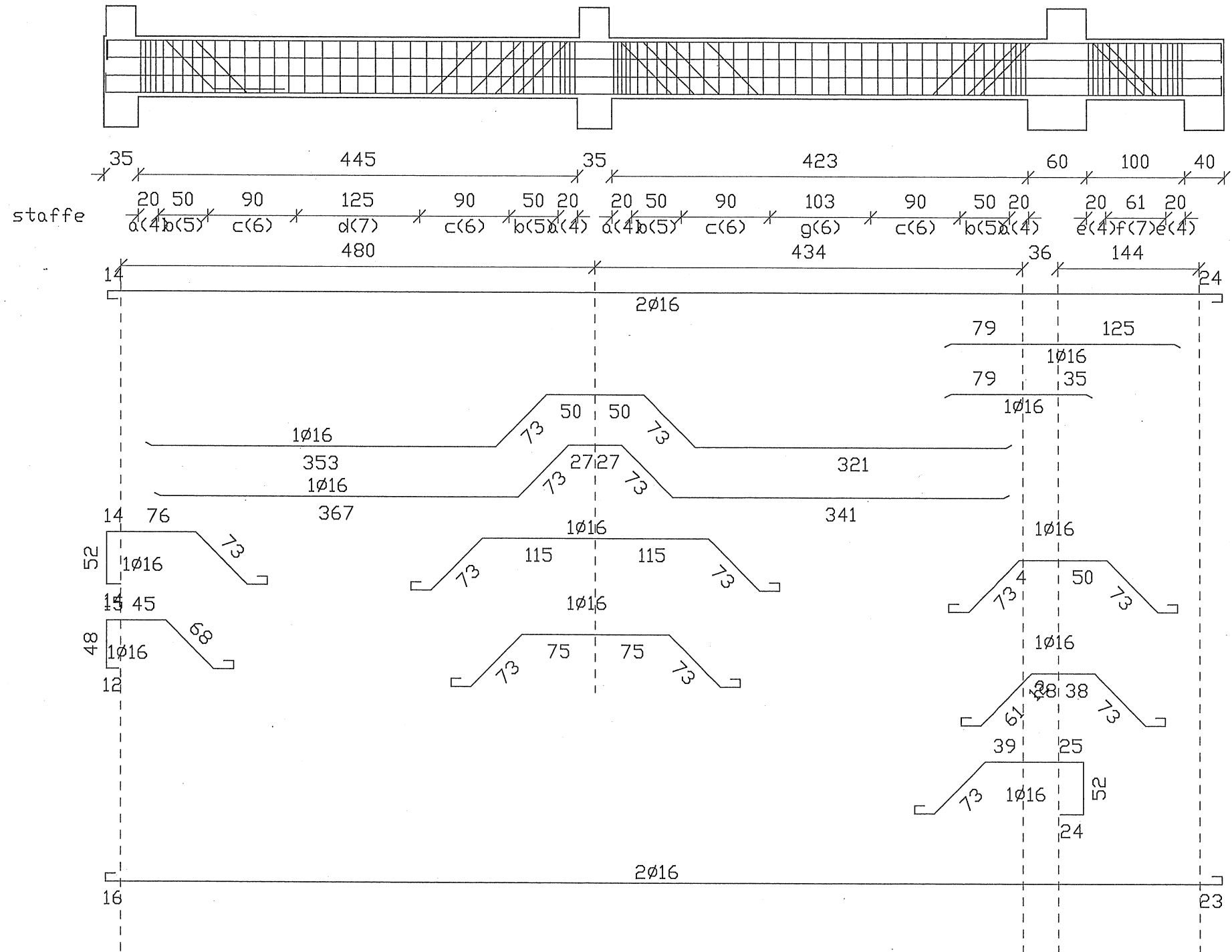
ARMATURA TRAVE 6-12 , 19-21 , 42-36 (piano terra)



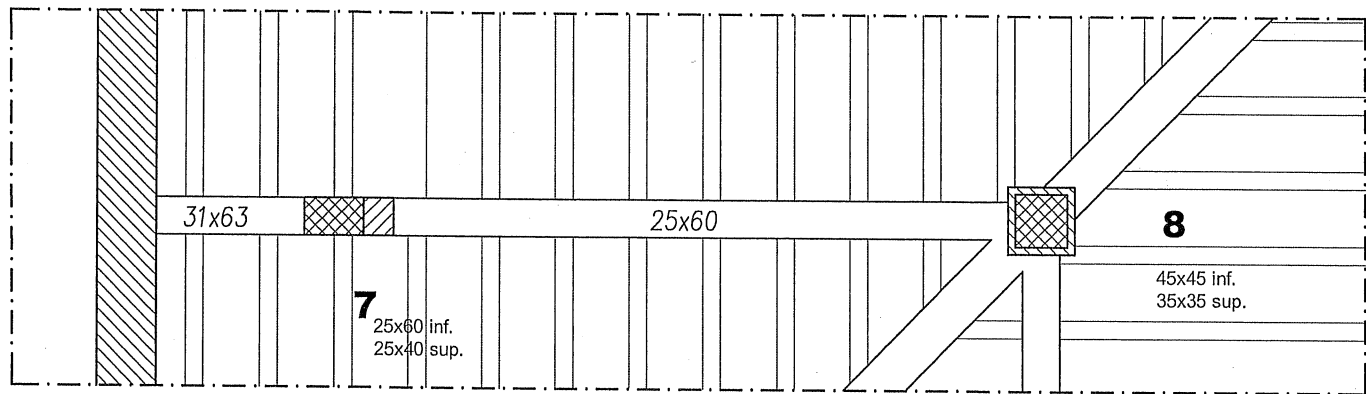
sezione scala 1:20



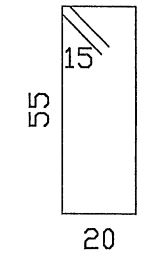
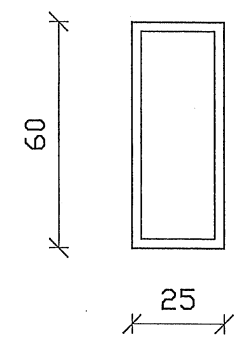
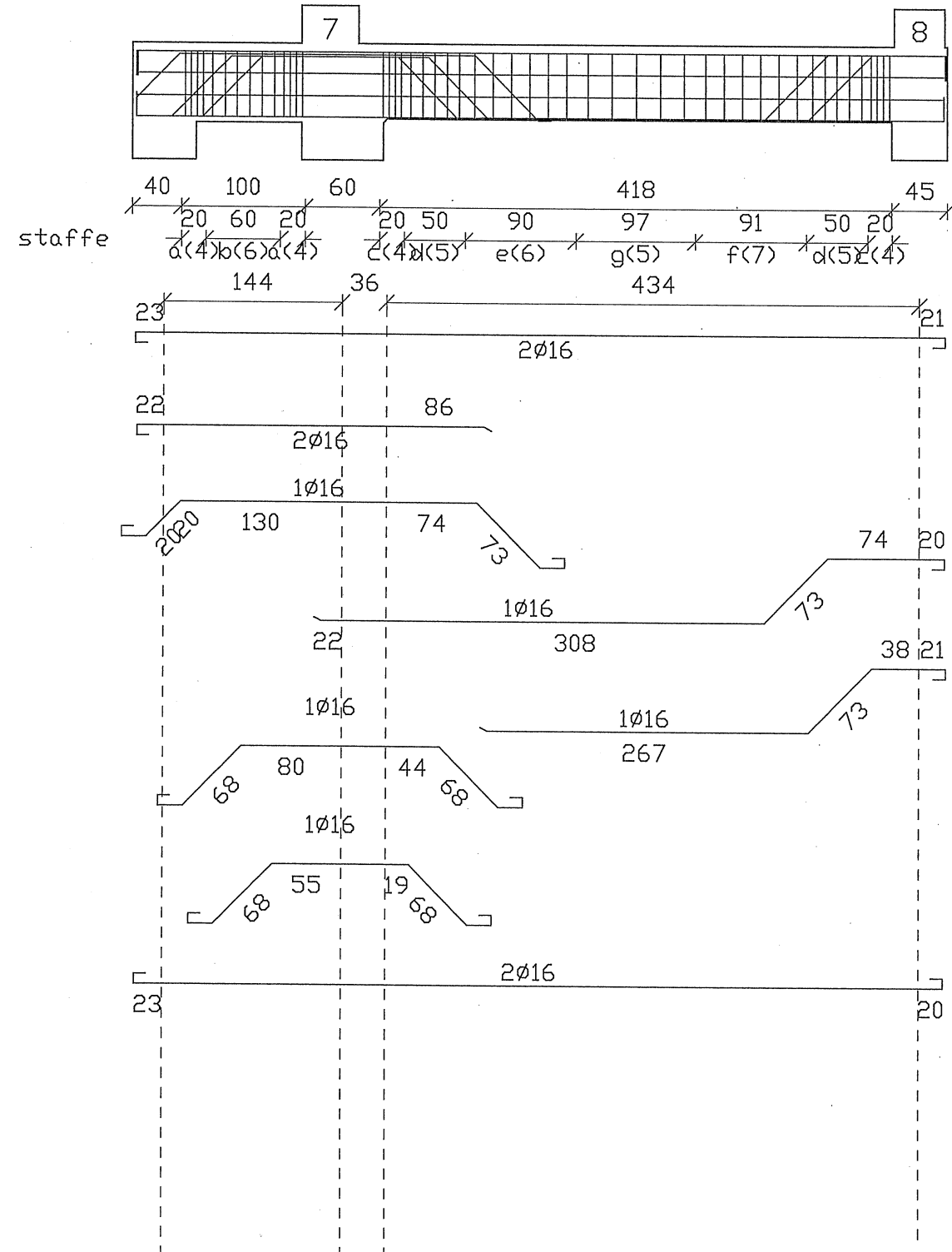
- a) st.Ø6/5
- b) st.Ø6/10
- c) st.Ø6/15
- d) st.Ø6/18
- g) st.Ø6/17
- L=180



ARMATURA TRAVE 7-8 , 11-8 , 23-22 , 26-23 , 37-38 , 41-38 (piano terra)

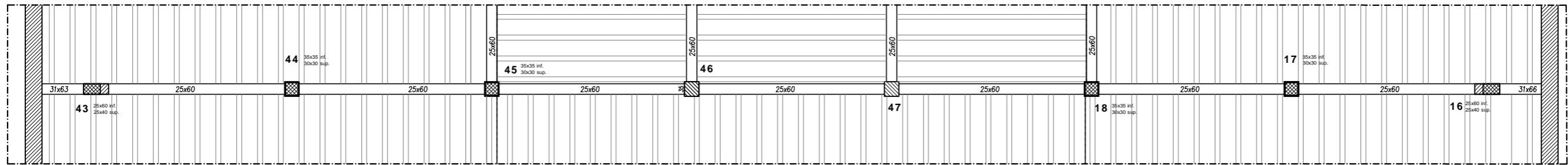


sezione scala 1:20

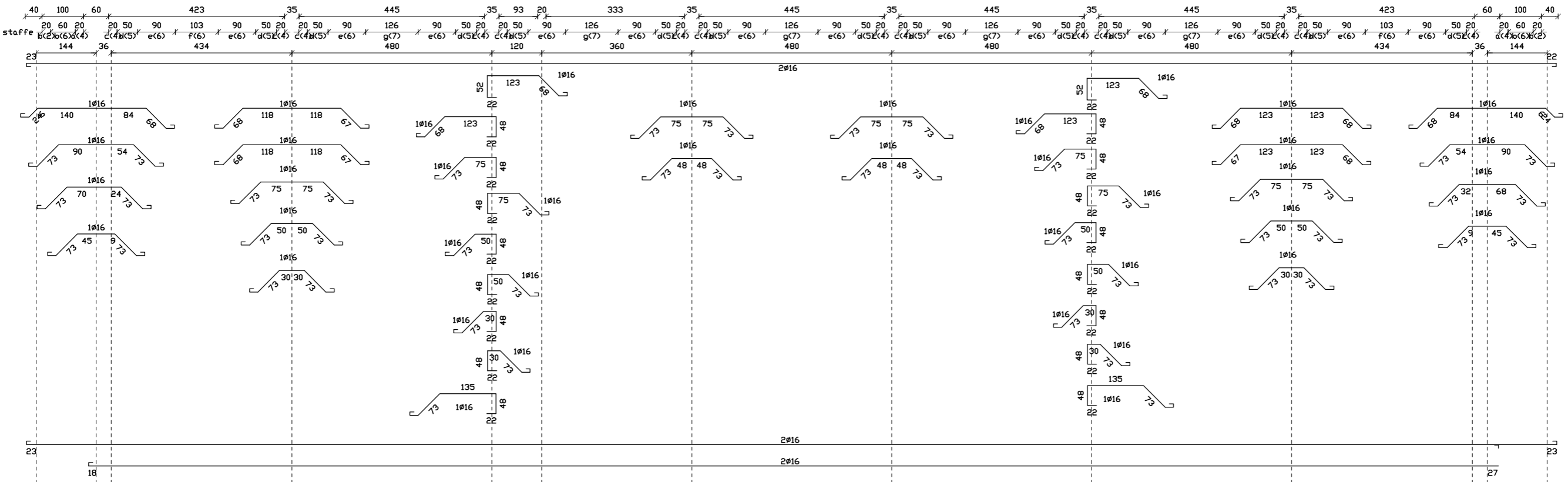
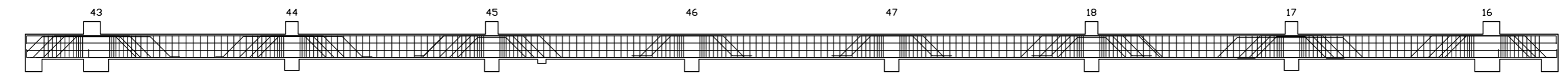
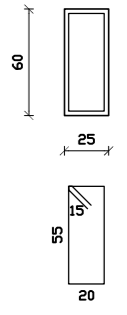


- c) st,Ø6/5
- d) st,Ø6/10
- e) st,Ø6/15
- f) st,Ø6/13
- g) st,Ø6/19
- L=180

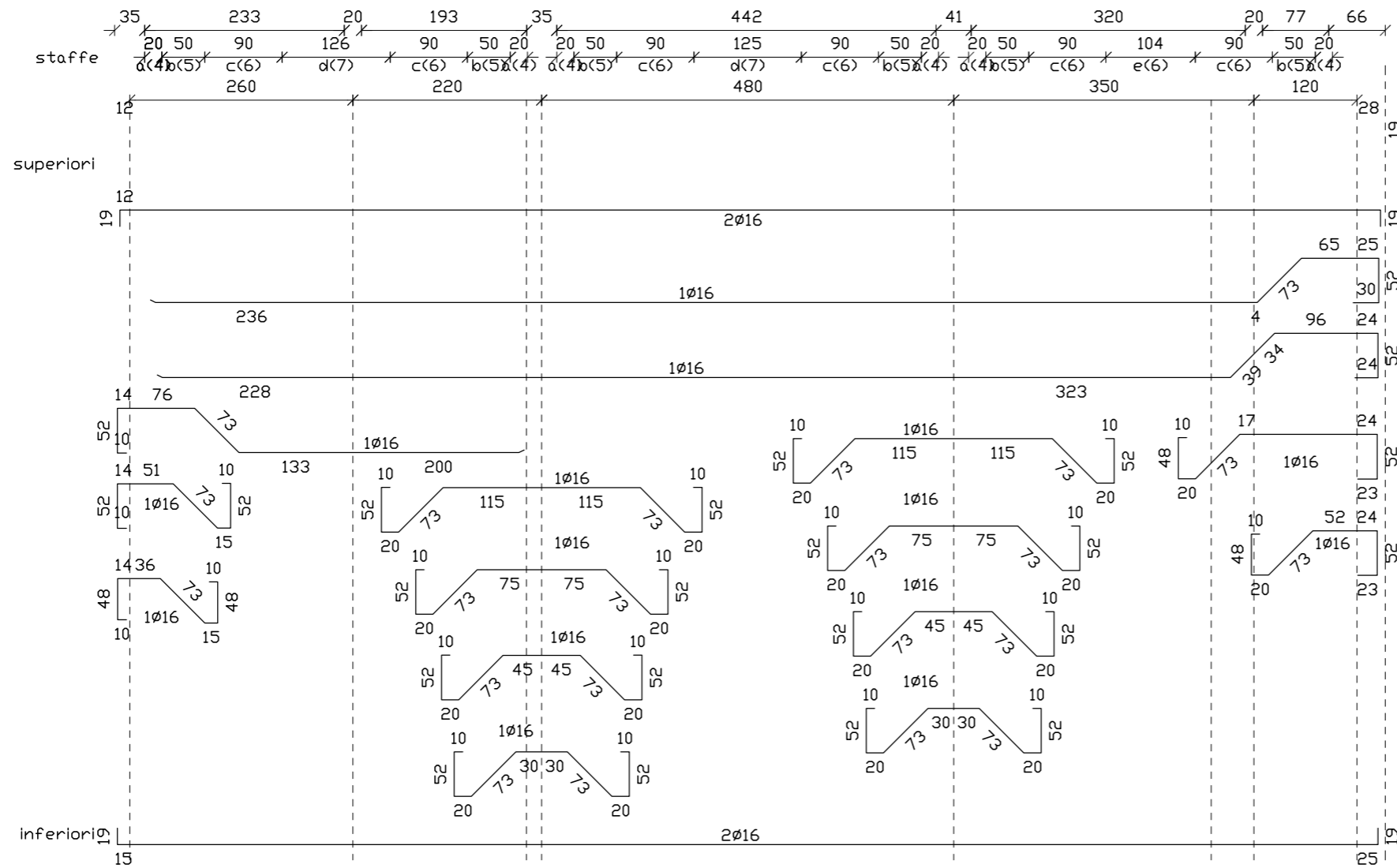
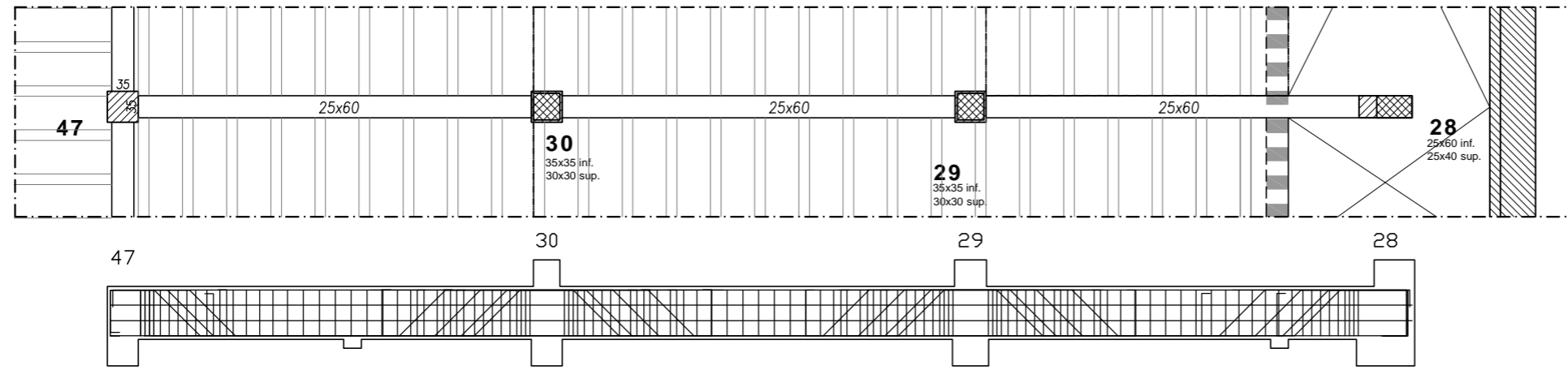
ARMATURA TRAVE 43-16 (piano terra)



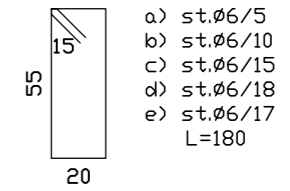
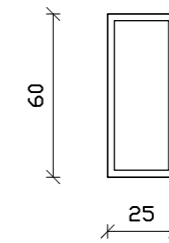
sezioni scala 1:20



ARMATURA TRAVE 28-47 (piano terra)



sezione scala



- a) st.Ø6/5
- b) st.Ø6/10
- c) st.Ø6/15
- d) st.Ø6/18
- e) st.Ø6/17
- L=180

